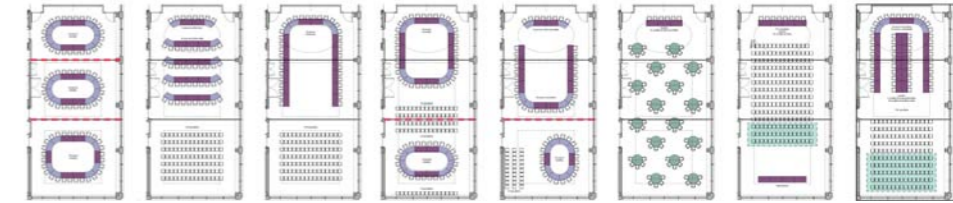
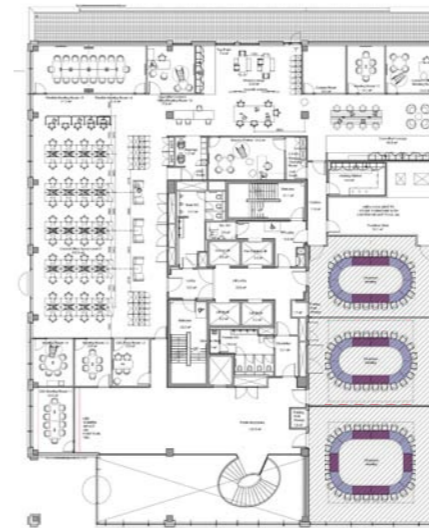


Crawley Town Hall

PROJECT PROFILE



Client Crawley Borough Council (CBC)
Location Crawley
Size / Cost Office 7,185 sqm NIA / £ 38 Mio
Completion 2023
Team Developer - Westrock
Cost - Gardiner & Theobald
Architect - Cartwright Pickard
Services - Griffiths Evans
Structures - Elliott Wood



Consarc assisted Crawley Borough Council's move into their own council-occupied space within a wider commercial development: The council is replacing their original 1960's low-density Town Hall with this entirely new 9-storey Civic Building, a new landscaped urban square and a significant amount of new housing.

Over the course of six years as client advisers to the council, Consarc contributed to the wider masterplan, provided workplace consultancy and interior design services. We ensured that key client requirements and levels of quality would be included in the base-build and fit-out contracts, especially for the civic spaces. Throughout, we consulted with senior management team, HR and customer services directors and undertook a staff consultation process enabling us to formulate the initial accommodation brief for a re-imagined and consolidated workplace and civic spaces.

Throughout, we carefully selected fittings, furniture and colour ranges with the client to enable organisational transformation through modern ways of working. Delivered over the pandemic, we adjusted the final workplace solution to reflect cultural changes, providing more collaborative settings, better focus workstations as well as incorporating more of the council's existing furniture.

Having developed the furniture concepts, we worked alongside the council procurement team, to source flexible furniture suitable for the formal conference setting. We designed the council chamber to be divided into three committee rooms and to enable flexible uses such as training rooms, lecture hall, ballroom or for awards ceremonies.

"It was a real delight to see staff tour the building. There is a very positive feeling about the new home of the organisation – it will make a big contribution to recruitment, retention and staff wellbeing."

Nigel Sheehan, Head of Partnership Services, CBC

Civic Personality

We designed the public and democratic spaces with civic pride expressed through careful detailing and quality of materials. Our stair within the civic foyer is designed as a sculptural feature for the double-height space. We subtly included heritage items such as the stone travertine from the previous Town Hall. Detailing of the modular timber wall and ceiling layout ensures that the subdivisible civic chamber works pleasingly in any combination of the constituent rooms.

Brief Development
Client Advisory
Workplace Consultancy
Specialist Advice
Interior Design

INTERIORS