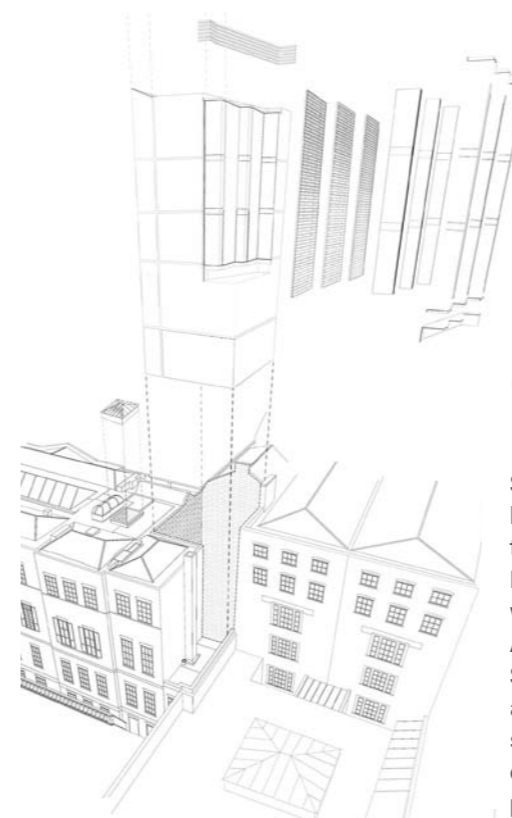


The Oriental Members Club

PROJECT PROFILE



Client The Oriental Club
Location London, UK
Size / Cost 8 bedrooms / £1.45 Million
Team Structures - Price & Myers
MEP - Synergy Consulting
Cost - Potter Raper Partnership
Project Management - Stace
Contractor - R. Durnell & Sons



The project consists in a contemporary new-build extension to the Grade I listed Stratford House in Central London. The landmark historical building is home to The Oriental Club, a vibrant Private Members' Club opened in 1824 situated within the Stratford Place Conservation Area and closely bounded by the Harley Street Conservation Area. We were appointed to undertake a feasibility study on the building's rear lightwell in order to improve facilities. A significant portion of the lightwell was occupied by a two-storey building, originally housing staff quarters. Our extensive study resulted in the replacement of the existing lightwell infill with a new build five-storey extension as well as re-configuring and upgrading parts of the existing building. The scheme achieved eight new guest bedrooms, improved sanitary facilities, new and upgraded staff accommodation and reworked back of house facilities including new office space.

form is sympathetic to the original Robert Adams building whilst offering a modern twist. The extension sits recessed to avoid dominance over neighbouring elevations. The stepped form in plan further ensures the scale of the new addition remains subservient to the adjacent elevations and ensures daylight to the guest rooms.

The threshold between old and new is expressed at roof level by the glazed link and glazed floor strip on the other floors, allowing natural light to trickle into the former lightwell.

"It has been a supreme pleasure working with Consarc and I am most grateful for the delivery of an inspired and functional addition to this fine Grade I Listed Building"

David Swain, Former Club Secretary, Oriental Club

Reclaimed materials and fabrics with high recycled content have been used where possible, selected for their longevity, low embodied energy and future recyclability. Many of the architectural elements are A+ rated by the BRE Green Guide.

Lead Design
Interior Design
Specialist Planning

ARCHITECTURE

Design & Materiality

The proposal built on feedback from an extensive consultation process with the Local Authority, English Heritage and neighbours within the Stratford Place Conservation Area. The new external