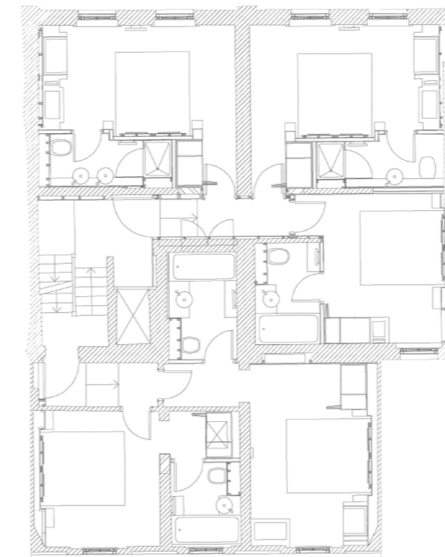


Sydney House Hotel 4*

PROJECT PROFILE



Client Andrew Brownsword Hotels
Location London, UK
Size / Cost 21 bedrooms / £2 Million
Team Structures - SKM Anthony Hunts
MEP - Silcock Dawson & Partners
Contractor - Vivid Interiors



Lead Consultancy
Cost Consultancy
Restoration
Planning

INTERIORS

Sydney House Hotel in London originally opened in 1991, with an opulent interior and rooms filled with an eclectic collection of furniture and original artefacts. In 2002 the 21-bedroom hotel was sold to Bath Priory. The new owners commissioned the experienced fit-out contractors Vivid Interiors and Consarc Architects to collaborate on the full refurbishment. We worked closely with the client to establish the brief and key aspirations: To brighten, open up and modernise the existing layouts and interior feel of Sydney House, within the strict planning constraints and delivering the full project in under 26 weeks.

Interior Design

The interior design incorporated the planners' desire for reinstating original features, and drew a coherent visual line between original and new. The distinction between the Georgian shell and modern scheme is made obvious in the carefully considered detailing. Corridors are part ash-panelled to resemble Georgian wainscoting. The original cornices and skirting boards were also reinstated throughout. The solid ash doors with slots for colour-coded signs are another area in which we managed to take the planners

requests for Georgian authenticity into consideration. Each room features a painting which co-ordinates with the room's unique colour scheme. The client, a serial art collector, purchased all the artwork from the start. The artwork drove the individual design, furniture selection and look and feel for each room, making each space unique.

"Consarc have brought Sydney House into the twenty-first century with this sensitive refurbishment."

B. Ryder, Sleeper Magazine

A consistent logic is applied across the interiors with panelling such as wardrobes being a tone darker than woodwork, in accordance with the classical Georgian language. Recessed lighting concealed in shallow wall niches housing the bed headboards provide a modern counterbalance. In the ground floor lounge, we recaptured the character and mood of a Georgian interior with stronger heritage colours. The modern fireplaces were tailor-made. We also worked on the exteriors in order to satisfy the planners, laying Portland stone and Georgian-style lighting.