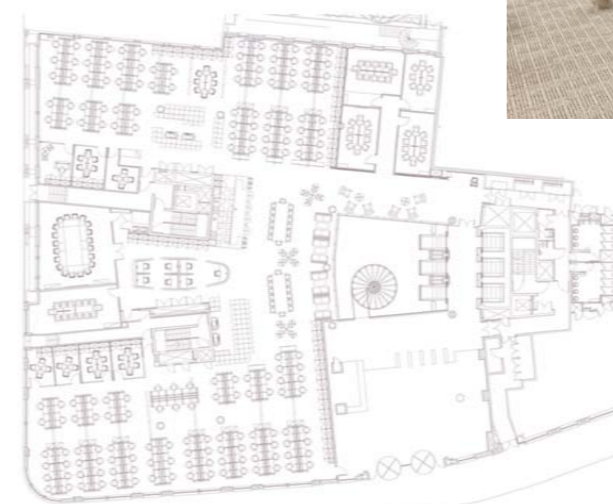


LaSalle London HQ

PROJECT PROFILE



Client LaSalle Investment Management
Location London, UK
Size / Cost 1,478 sqm NIA / £1.5 Million
Team MEP - Hoare Lea
Cost - JLL
PM - JLL
Contractor - The Interiors Group



LaSalle Investment Management appointed Consarc to design their new office headquarters in the heart of London's Mayfair to accommodate the relocation of 150 staff from different offices. The client's brief called for a consolidation of all staff onto one floor, improved internal communication and an enhanced brand identity. The project involved an extensive replacement of Cat A elements, a full-end user Cat B fit-out and the selection and procurement of loose furniture.

The strong and established relationship between Consarc and LaSalle contributed significantly to the project's success with architect and client working very closely from start to finish. Consarc's director undertook one-on-one interviews with over 65 staff enabling the development of a brief and a design uniquely tailored to their needs. The feedback was implemented in every aspect of the design. Consarc delivered a range of services, macro to micro, ranging from space planning to the design and integration of unique graphics strengthening the corporate identity.

Cultural Change & Added Value

With the introduction of variable density desking between work teams and a retrievable off-site filing system, Consarc enabled the organisation to reduce

their space requirement by 40% all the while allowing all users to maintain dedicated workstations. The resulting additional space allowed the creation of generous communal spaces and facilities, encouraging cross team collaboration.

"I am so thrilled to see how people are using the office. It is totally exceeding my expectations"

Susan Lloyd-Hurwitz, Managing Director, LaSalle

The interior design transforms the dated existing office by introducing large open plan work spaces and clear visual corridors linking the two flanks of the space. A classic palette of white, greens and walnut gives a sense of timeless style. The overall effect is very calming with the client reporting a significant reduction in noise levels. A stylish modern servery and flexible seating area sits central to the office creating a communal hub and encouraging interaction at different levels; from impromptu client meetings, working and dining. In direct response to staff requests for a quiet zone Consarc designed a dedicated 'Library' area, with individual booths designed for focused tasks require higher levels of concentration and privacy.

Workplace Consultancy
Interior Design & Fit Out
Furniture Procurement
Moves Management
Filing Audit
Art & Graphics

WORKPLACE