

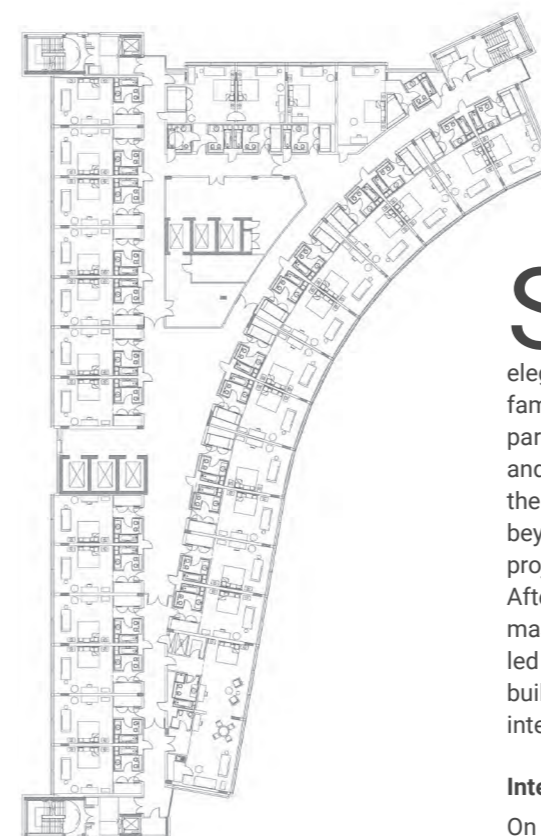
The Lowry Hotel 5*

PROJECT PROFILE



Client Rocco Forte Hotels
Location Manchester, UK
Size / Cost 164 bedrooms / £33 Million
Team Structures - Buro Happold
MEP - Buro Happold
Cost - Gardiner & Theobald
Contractor - Jarvis Construction

Awards FX International Design Award:
Best New Hotel 2001
Manchester Life Magazine:
Hotel of the Year 2001
Sleeper Magazine: Hotel of the
Year 2001
Condé Nast Traveller Top 10:
Hot New Hotels May 2002
Condé Nast Traveller: One of
the 32 Coolest Hotels in the
World April 2002



Situated next adjacent to the River Irwell in Manchester, the Lowry Hotel provides a modern and elegant backdrop to Santiago Calatrava's famous Trinity Bridge. The hotel forms part of a gateway into Salford, enclosing and framing a large urban piazza. From the earliest stages of design we looked beyond the brief and considered the project within its wider urban context. After completing a comprehensive masterplan study of the area, Consarc led the design and delivery of the new building as well as providing the full interior design service.

Interior Design

On the lower floors, the public areas along the south elevation link a central three-storey atrium with the exterior piazza, establishing a striking yet welcoming space, described as 'one of the best in the city' by Phil Griffin of Manchester City Life. The contemporary feel of the hotel is established in the entrance lobby, where the dark stone floor contrasts with a textured coloured wall. A sculptural glass reception and elegant double-height stair dominate this space.

In the north-eastern corner, the service core facilitates access between the service goods bays in the basement and

the back-of-house areas on each floor. The health suite and meeting rooms occupy the western end of the building with a unique entrance and can operate independently to the hotel with its own entrance, reception and stairs.

"The hotel presses all the right buttons for customers use to high-end contemporary Hotels."

Susan Marling, The Independent on Sunday

The main entrance lobby establishes a luxury, bold and modern feel. A specially commissioned glass sculptural reception desk becomes a focal point for the space as does an elegant steel and glass stair rising up two floors through a central atrium. A floating "artwall" provides support to bespoke art. All artwork throughout the hotel was selected to enhance the contemporary atmosphere established by the built form.

On the upper bedroom floors, the lift halls open onto generous central lobbies with clear, uninterrupted views through full-height glazing at the end of each of the corridor arms creating a sense of space. The 164 bedrooms of a minimum of 40 sqm are arranged around this central vertical core.

Lead Design
Masterplanning
Architecture

INTERIORS