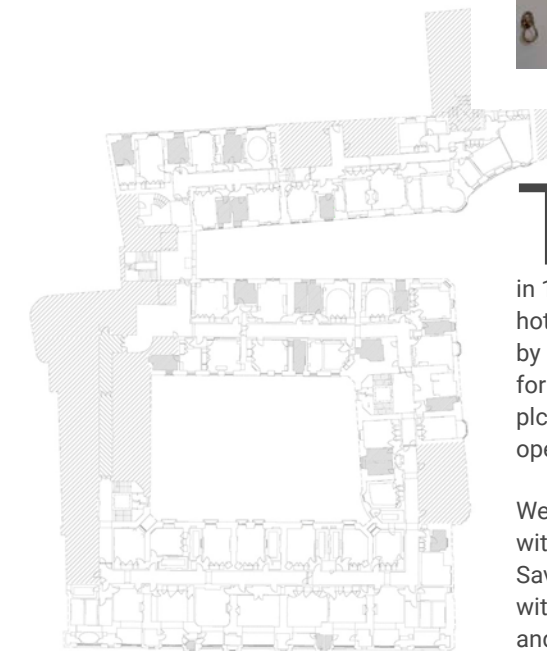


The Fairmont Savoy Hotel 5*

PROJECT PROFILE

Client	Fairmont Hotels & Resorts
Location	London, UK
Size / Cost	270 bedrooms / £7.5 Million
Team	Structures - Waterman Partnership MEP - Kontrax Management Cost - HCD Group Interiors - Richmond International Contractor - Cornhill Interiors



The Grade II listed Savoy Hotel, located in a prime spot on the Strand in Central London, was built in 1898 and is possibly one of the oldest hotels in the world. The building is owned by Kingdom (the hotel investment vehicle for Prince Alwaleed Bin Talal) and HBOS plc. Fairmont Hotels and Resorts Ltd operate a long lease on the hotel.

We were appointed by Fairmont to assist with the first step of the roll-out of the Savoy Hotel refurbishment program, with the aim to upgrade 270 bedrooms and 20 suites, comprising of over 300 room modules in total. The key objective was a significant improvement of the bedroom block, including the updating of bathrooms to incorporate modern en-suites and walk-in showers. We prepared full design drawings and specifications for the model bedroom refurbishments, to create a high quality, contemporary standard benchmark level for the rooms and suites. This included the introduction and integration of audio/visual and IT communication links. The model rooms and suites were completed during the summer of 2005.

“The design aimed to weave the refurbishment seamlessly into the historic fabric, updating the property whilst maintaining fidelity to and the integrity of the original language of material and design.”

Liz Pickard, Director, Consarc Architects

Heritage & Materiality

A Historical Impact Assessment was undertaken for the 1900-1930's refurbishments, which, albeit not original, were now deemed of historic interest. Vitrolite, an innovative enamelled 1920/30's glass used for the bathroom ceilings, went out of production in the 1950's, and is now seen as a quintessential Art Deco interior finish. Vintage sanitary features were retained and integrated into the new bathrooms, enhancing the historic authenticity whilst providing a significant aesthetic and functional uplift.

Planning
Project Management

ARCHITECTURE